



Instituto Tecnológico de Chihuahua

Mobile Learning and Smart Embedded Systems Lab.



# Building an IoT Smart Sensor Network and Platform for Smart Classrooms

Presented by :

Raúl G. A. Sánchez Ruiz  
Alberto Pacheco González

23/03/2018

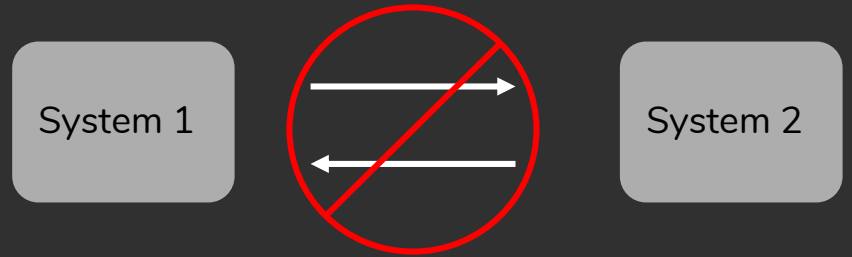


Colaboración | Innovación | Investigación | Inteligencia | Aprendizaje | Sostenibilidad



Ability of systems to work with other systems

# Interoperability



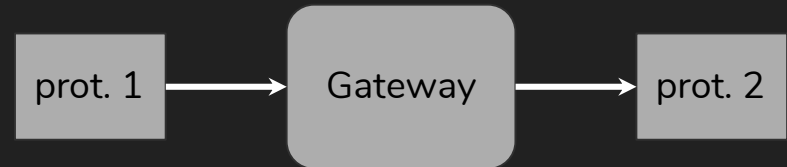
-40% ↓

# How is interoperability addressed?

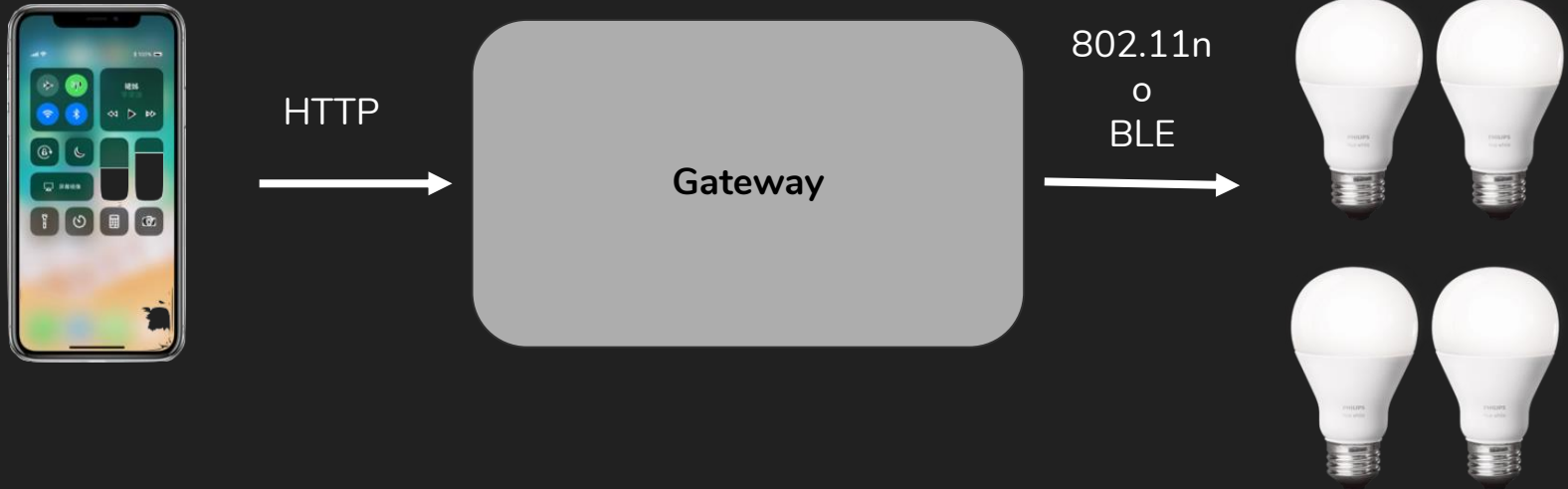
Application level:  
-Semantic uniformity

Device and  
link level:  
-Gateways

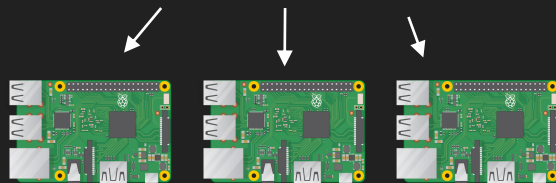
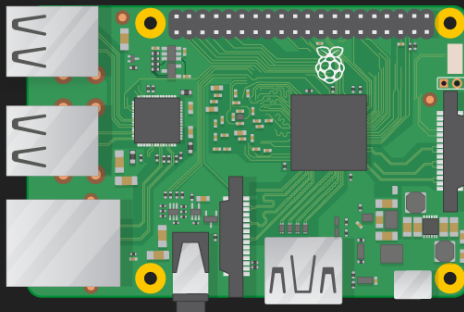
```
ex:Device a ssn:SensingDevice ;  
  ex:madeIn dpedia-owl:Taiwan ;  
  as:hasAttribute ex:value ;  
  as:hasAttribute ex:location .  
  
ex:value as:associatedTo < sib:vtt.fi:10011 > .  
ex:location as:associatedTo < sib:vtt.fi:10011 > .
```



# An IoT Wireless Sensor Network in Classroom



# Conclusions and future work



Complete platform



Raúl Sánchez

Master Degree Student on  
ITCH

Twitter: @raulbass6

Correo: rgsanchez@ieee.org